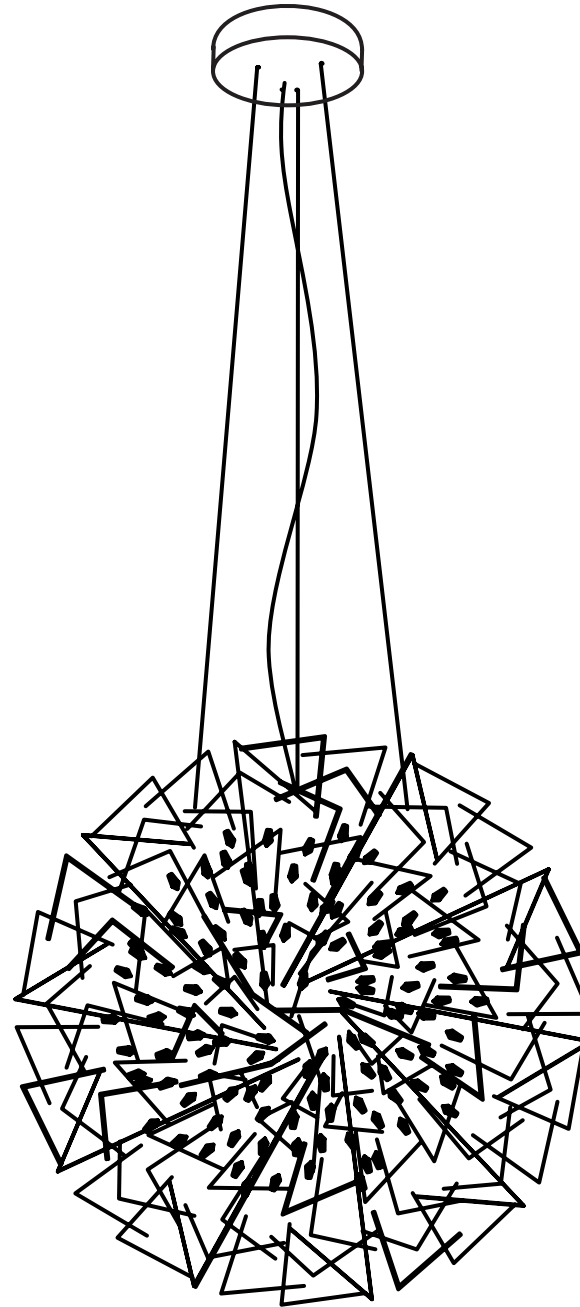


**TERZANI**  
LA LUCE PENSATA

**Core** sphere pendant light

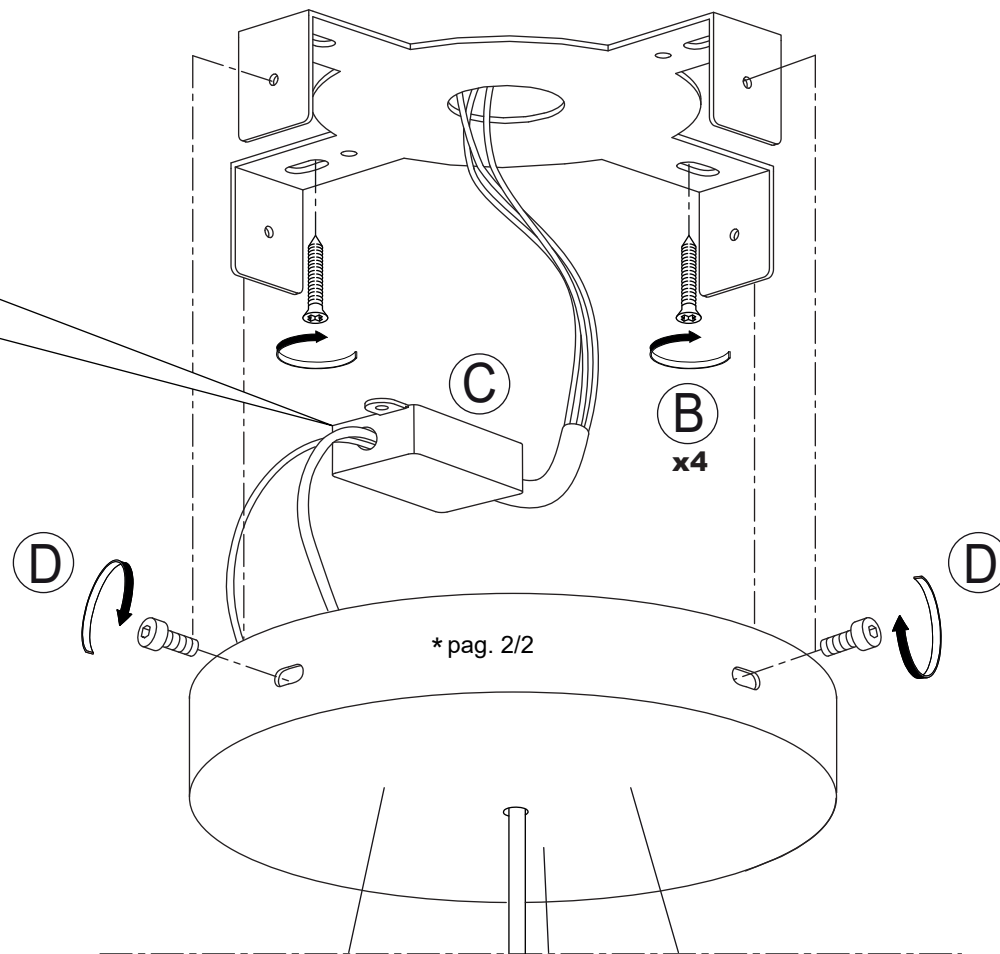
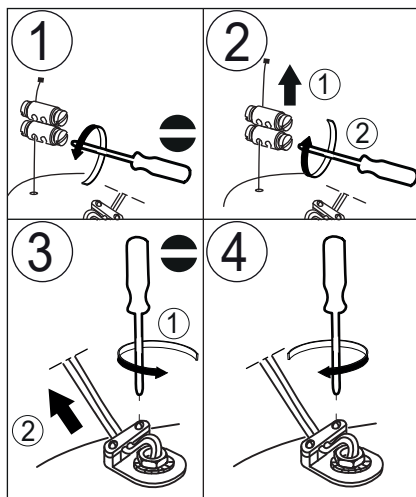
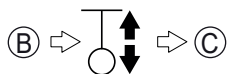
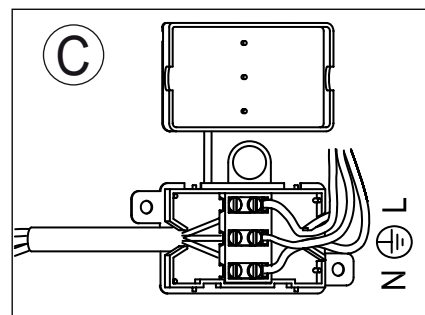
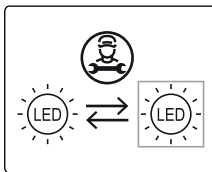
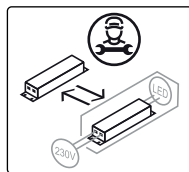
0P20S-F

0P20S-FW



Design Christian Lava

**integrated LED**



**TERZANI**  
LA LUCE PENSATA

**CORE**

**CODE 0P20S -- F**  
3000K

**CODE 0P20S -- FW**  
2700K

**220-240V ~ 50/60Hz MAX 18W**

**550mA 1xMAX 18W**

**integrated LED**



16,5Kgf  
165N



1...10 V

PUSH



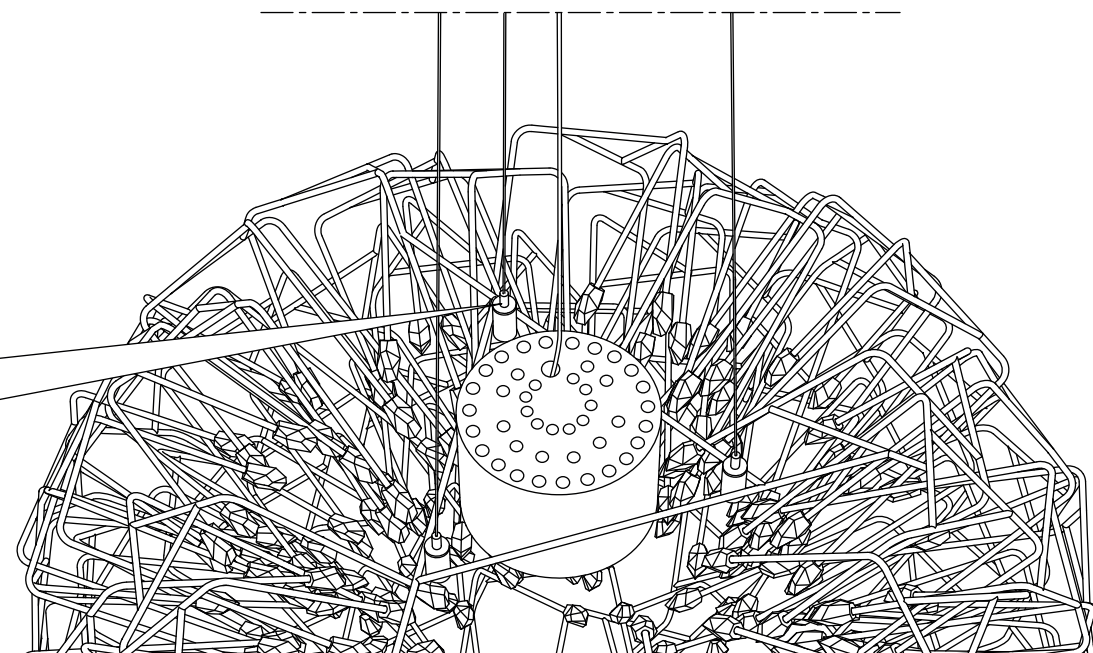
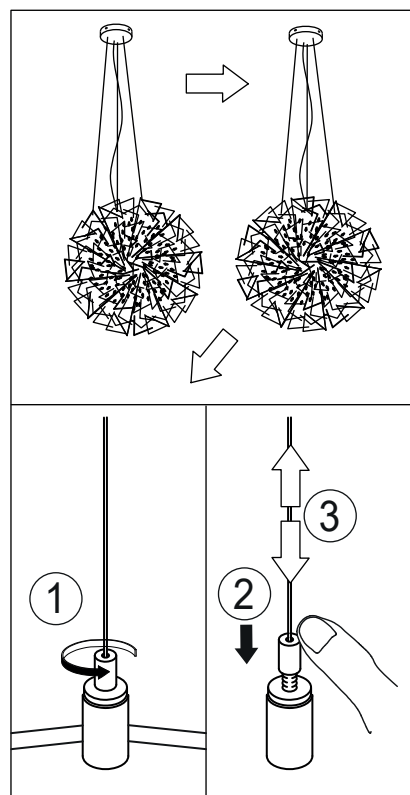
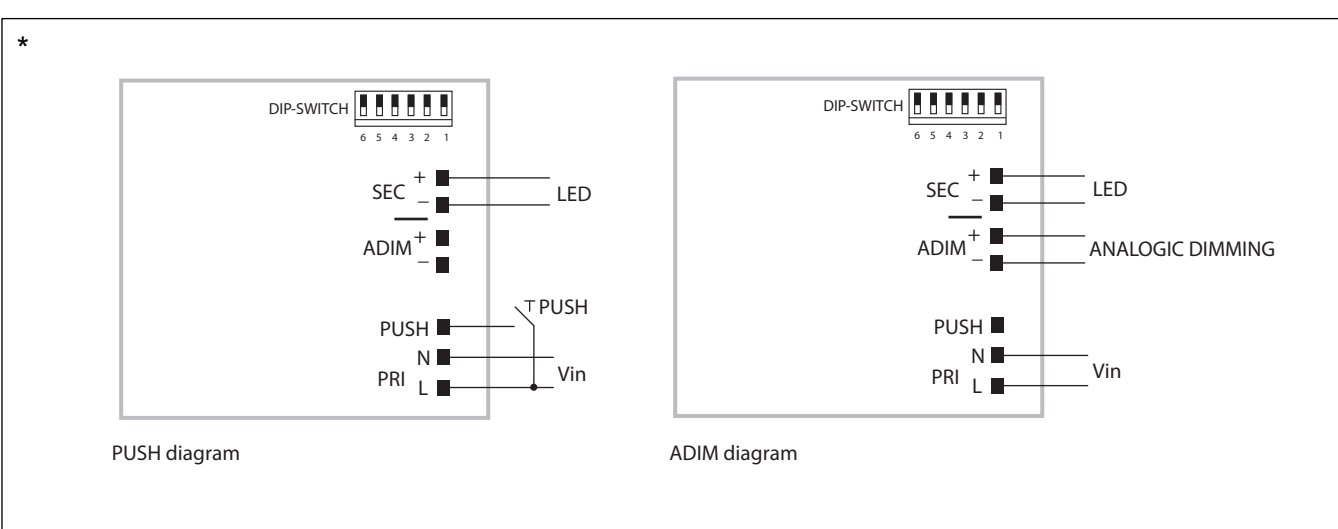
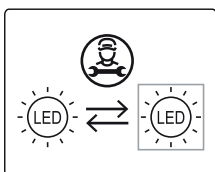
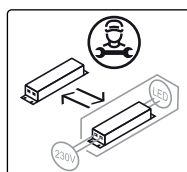
x1,1m



30000h

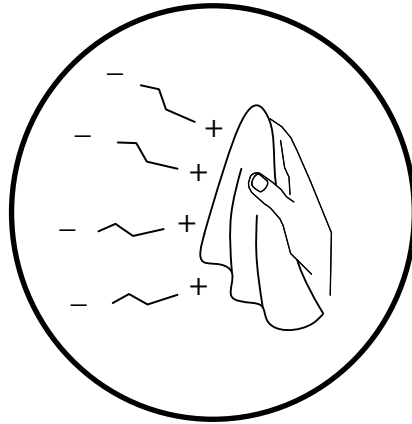


ERC



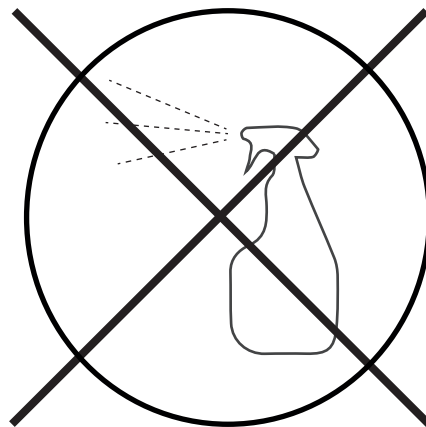
# CLEANING INSTRUCTIONS

## YES



- IT** Usare panno elettrostatico asciutto  
**UK** Use dry electrostatic cloth  
**FR** Utiliser un chiffon électrostatique sec  
**DE** Verwenden sie ein trockenes elektrostattuch  
**PY** Использовать сухую электростатическую ткань  
عربي استخدم قطعة قماش جافة كهرباء

## NO



- IT** Non usare prodotti chimici | Usare prodotti specifici solo per cristalli e vetri  
**UK** Do not use chemical products | Use specific products only for crystals and glass  
**FR** Ne pas utiliser des produits chimiques | N'utiliser des produits spécifiques que pur les cristaux et le verre  
**DE** Verwenden Sie keine Chemikalien | Verwenden Sie bitte nur Glas-bzw Kristallreiniger  
**PY** Нельзя использовать химикаты | Использовать только специальные средства для хрусталя и стекла  
عربي لا تستخدم المنتجات الكيماوية | استعمل مواد مخصصة للكريستال والزجاج فقط



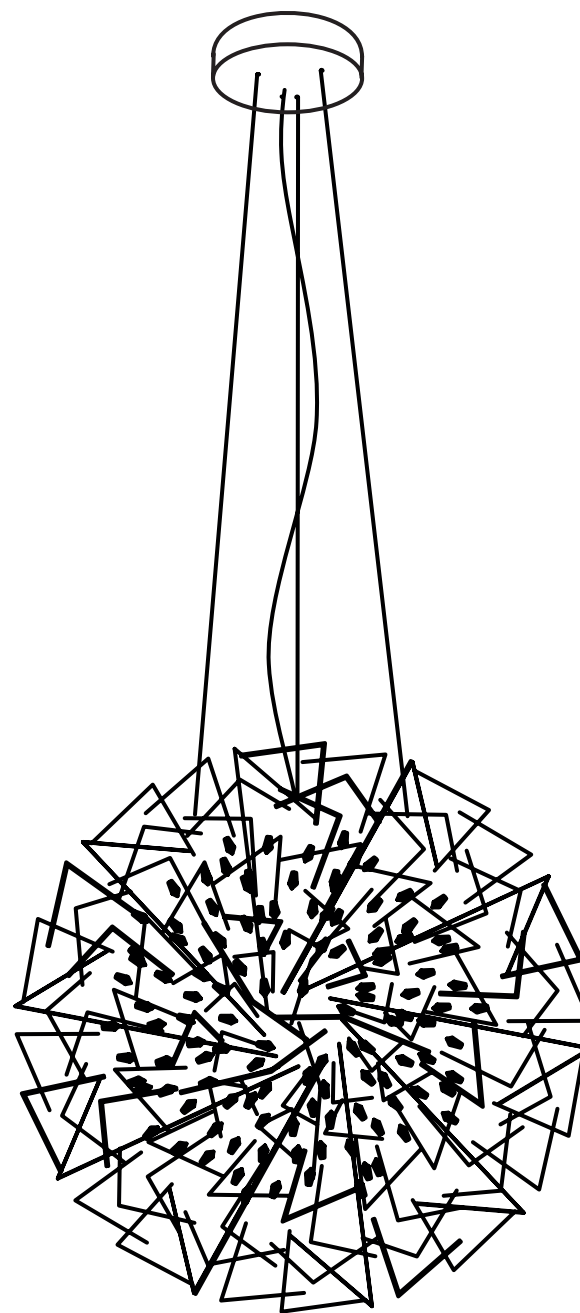
**IT** Conservare questa istruzione per la manutenzione | **UK** Keep these instructions for maintenance  
**FR** Garder ces instructions pour l'entretien | **DE** Diese Wartungsanleitung ist aufzubewahren  
**PY** Сохраните эту инструкцию по эксплуатации | عربي احتفظ بهذه الإرشادات للصيانة

**TERZANI**  
LA LUCE PENSATA

**Core** sphere pendant light

0P20S-FD

0P20S-FWD



Design Christian Lava

**CORE**

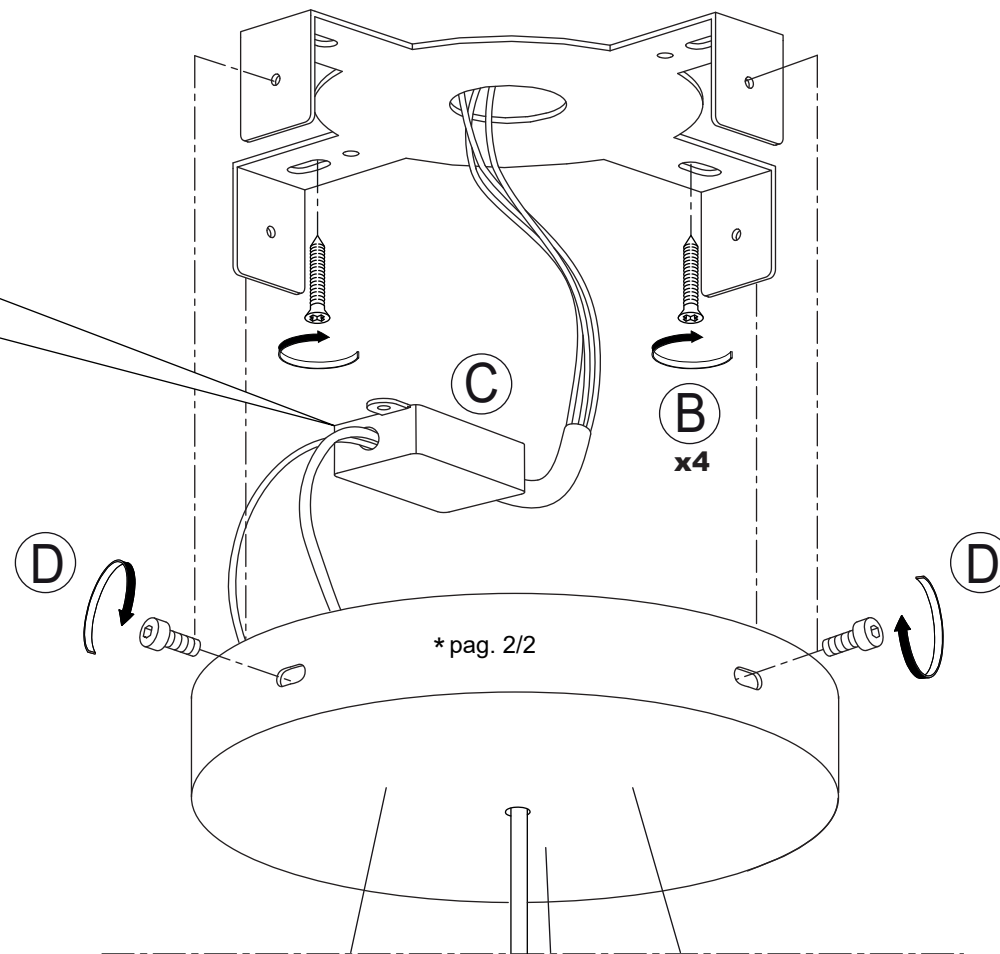
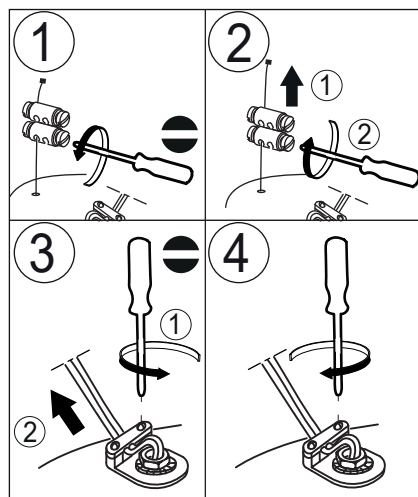
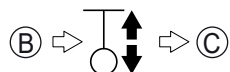
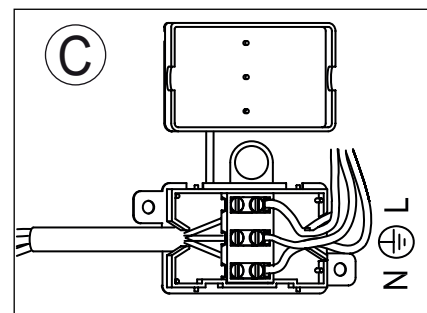
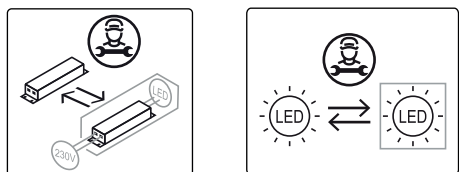
**CODE 0P20S -- -- FD**  
3000K

**CODE 0P20S -- -- FWD**  
2700K

**220-240V ~ 50/60Hz MAX 18W**

**550mA 1xMAX 18W**

**integrated LED**



**TERZANI**  
LA LUCE PENSATA

**CORE**

**CODE 0P20S -- -- FD**  
3000K

**CODE 0P20S -- -- FWD**  
2700K

**220-240V ~ 50/60Hz MAX 18W**

**550mA 1xMAX 18W**

**integrated LED**



16,5Kgf  
165N



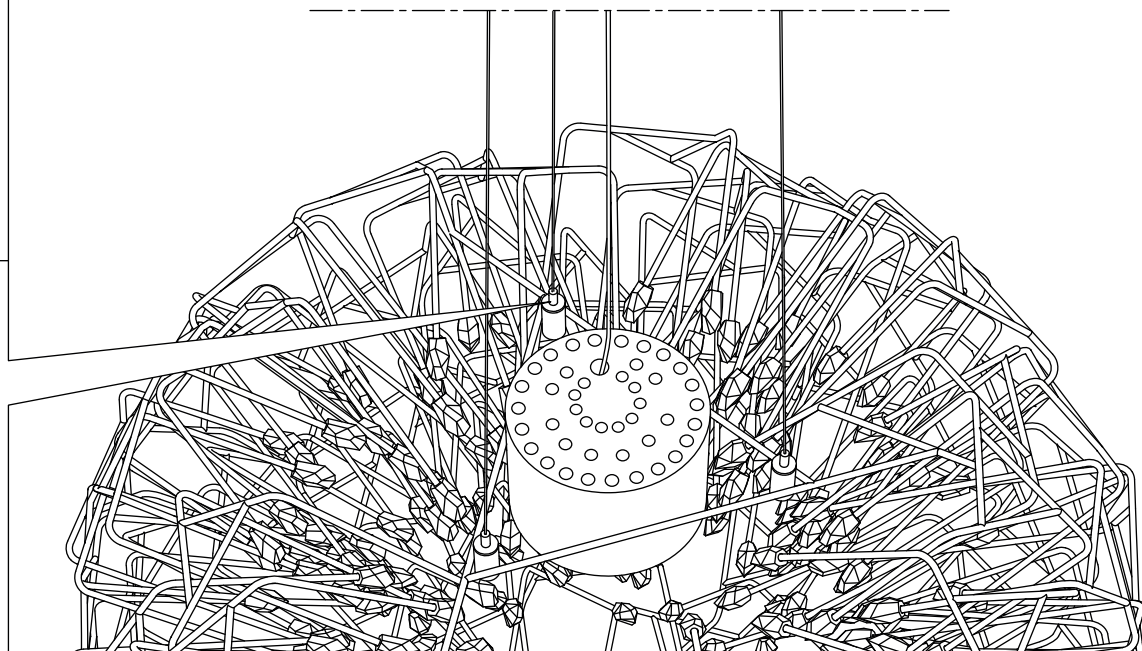
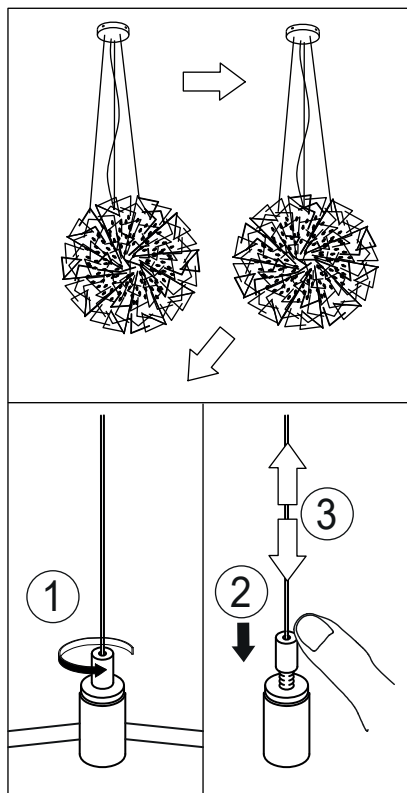
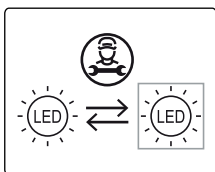
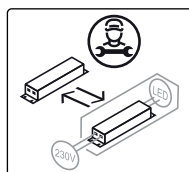
x 1,1m



30000h



**ERC**



\*

DALI diagram

DIP-SWITCH 4 3 2 1

SEC + LED

SEC - LED

NTC THERMAL SENSOR



DA2

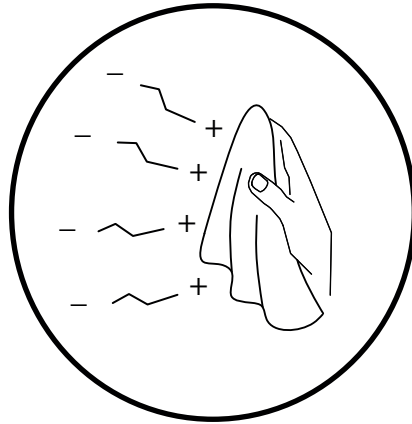
DA1

PRI N Vin

L

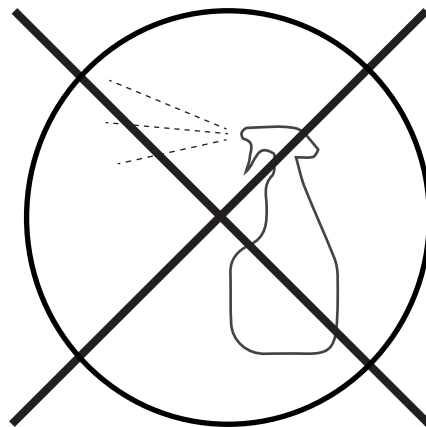
# CLEANING INSTRUCTIONS

## YES



- IT** Usare panno elettrostatico asciutto  
**UK** Use dry electrostatic cloth  
**FR** Utiliser un chiffon électrostatique sec  
**DE** Verwenden sie ein trockenes elektrostattuch  
**PY** Использовать сухую электростатическую ткань  
عربي استخدم قطعة قماش جافة كهرباء

## NO



- IT** Non usare prodotti chimici | Usare prodotti specifici solo per cristalli e vetri  
**UK** Do not use chemical products | Use specific products only for crystals and glass  
**FR** Ne pas utiliser des produits chimiques | N'utiliser des produits spécifiques que pur les cristaux et le verre  
**DE** Verwenden Sie keine Chemikalien | Verwenden Sie bitte nur Glas-bzw Kristallreiniger  
**PY** Нельзя использовать химикаты | Использовать только специальные средства для хрусталя и стекла  
عربي لا تستخدم المنتجات الكيماوية | استعمل مواد مخصصة للكريستال والزجاج فقط



**IT** Conservare questa istruzione per la manutenzione | **UK** Keep these instructions for maintenance  
**FR** Garder ces instructions pour l'entretien | **DE** Dies Wartungsanleitung ist aufzubewahren  
**PY** Сохраните эту инструкцию по эксплуатации | عربي احتفظ بهذه الإرشادات للصيانة