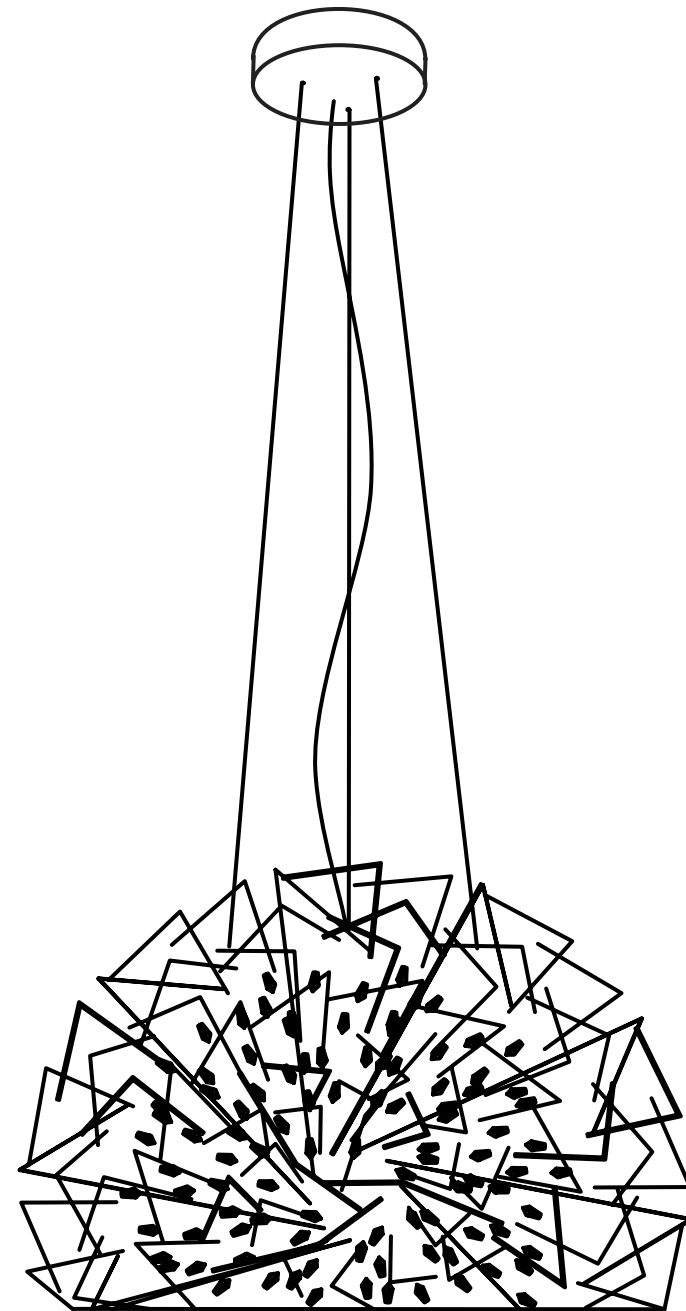


TERZANI
LA LUCE PENSATA

Core dome pendant light

0P21S-F

0P21S-FW



Design Christian Lava



CORE

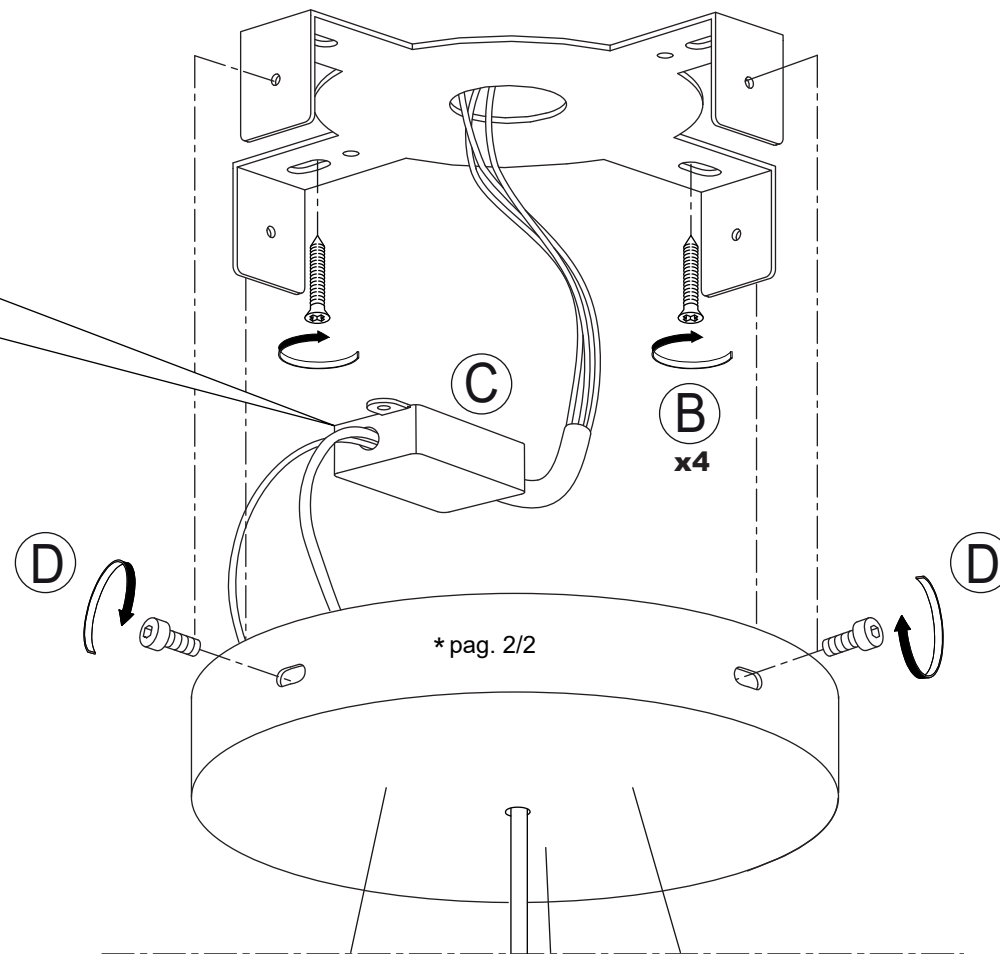
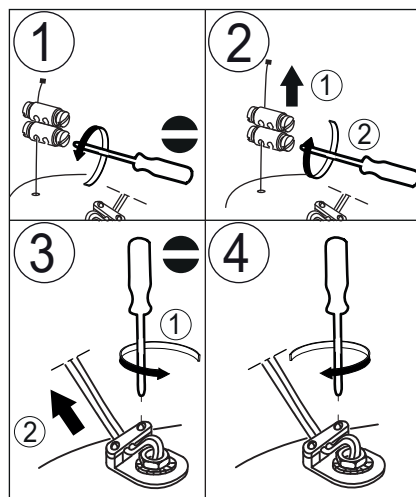
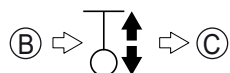
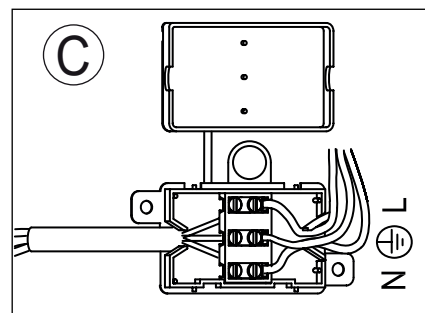
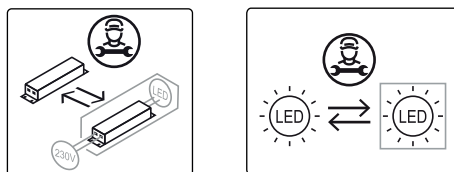
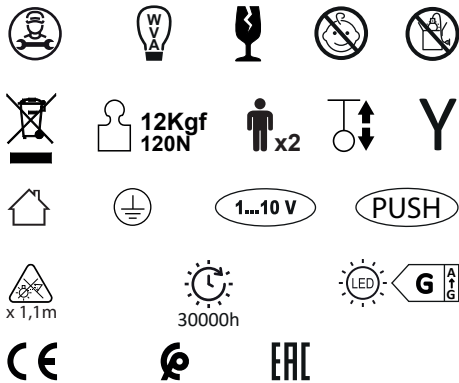
CODE 0P21S --- F
3000K

CODE 0P21S --- FW
2700K

220-240V ~ 50/60Hz MAX 18W

550mA 1xMAX 18W

integrated LED





CORE

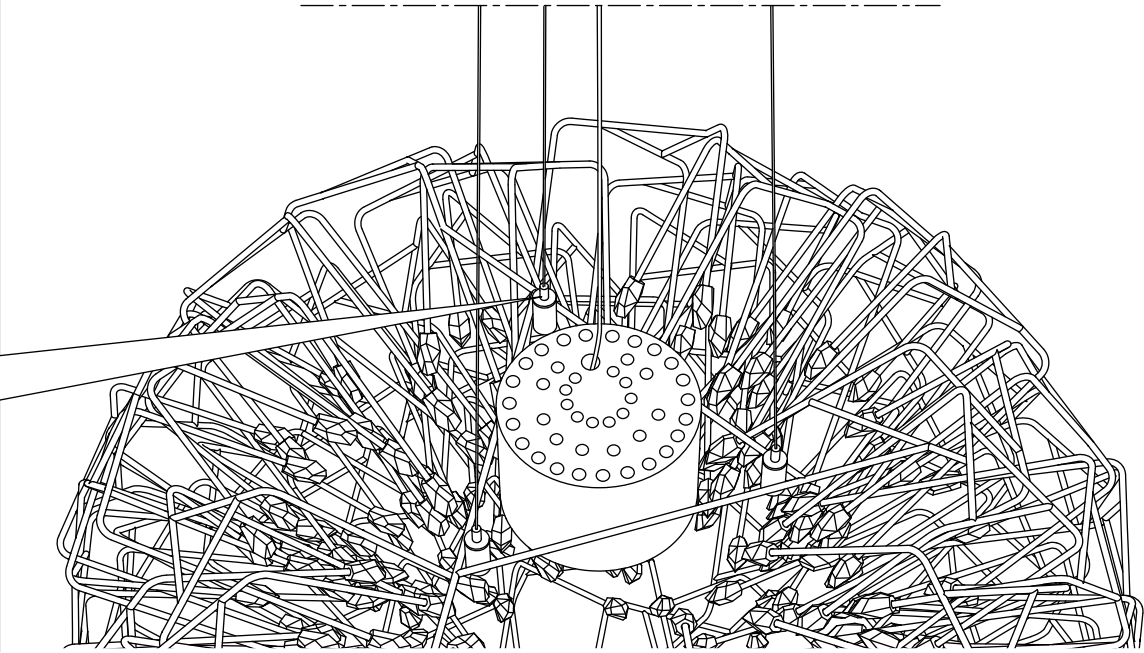
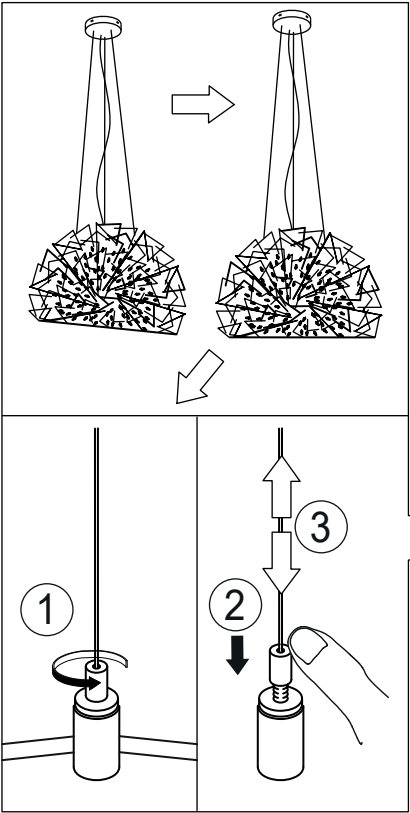
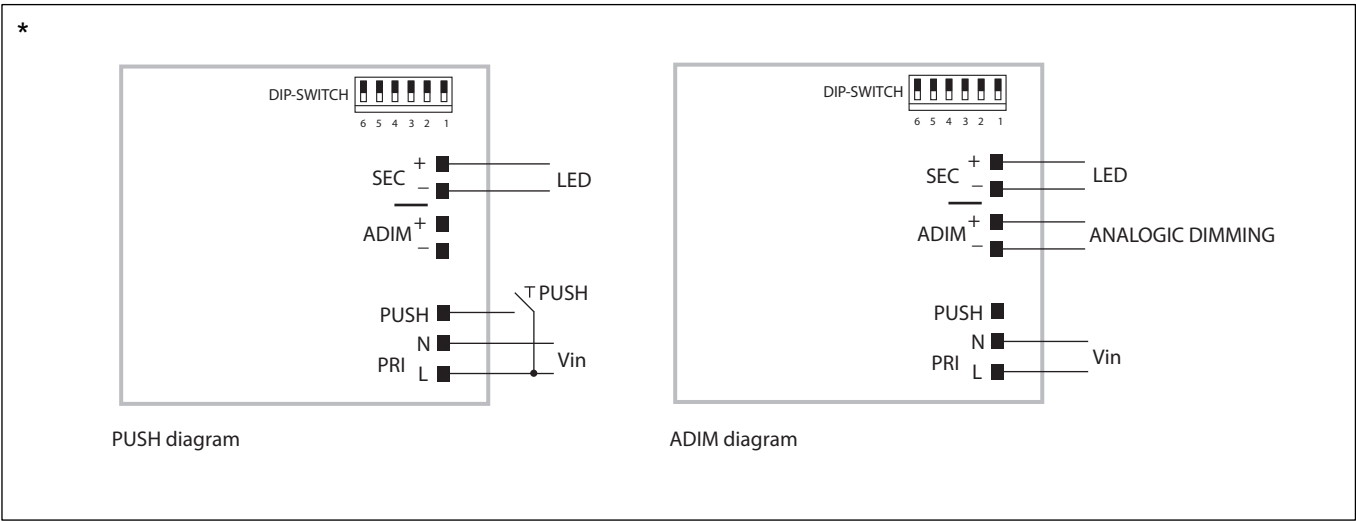
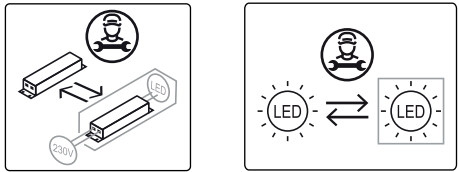
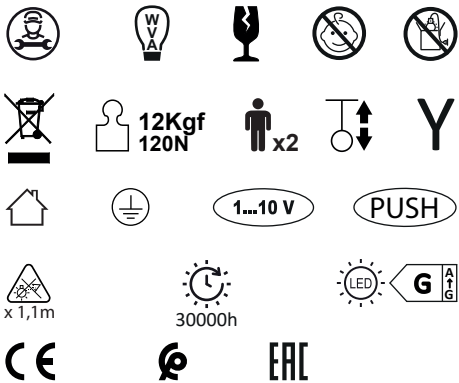
CODE 0P21S -- F
3000K

CODE 0P21S -- FW
2700K

220-240V ~ 50/60Hz MAX 18W

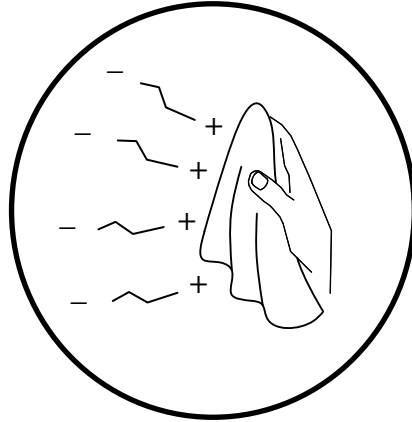
550mA 1xMAX 18W

integrated LED



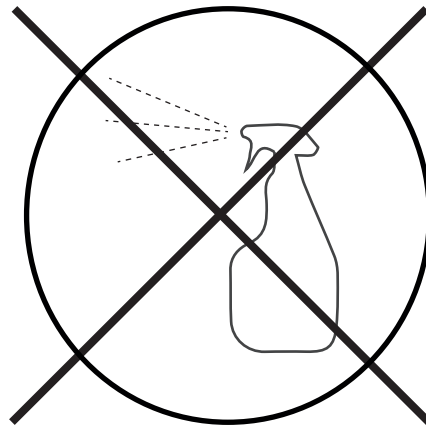
CLEANING INSTRUCTIONS

YES



- IT** Usare panno elettrostatico asciutto
UK Use dry electrostatic cloth
FR Utiliser un chiffon électrostatique sec
DE Verwenden sie ein trockenes elektrostattuch
PY Использовать сухую электростатическую ткань
عربي استخدم قطعة قماش جافة كهرباء

NO



- IT** Non usare prodotti chimici | Usare prodotti specifici solo per cristalli e vetri
UK Do not use chemical products | Use specific products only for crystals and glass
FR Ne pas utiliser des produits chimiques | N'utiliser des produits spécifiques que pur les cristaux et le verre
DE Verwenden Sie keine Chemikalien | Verwenden Sie bitte nur Glas-bzw Kristallreiniger
PY Нельзя использовать химикаты | Использовать только специальные средства для хрусталя и стекла
عربي لا تستخدم المنتجات الكيماوية | استعمل مواد مخصصة للكريستال والزجاج فقط



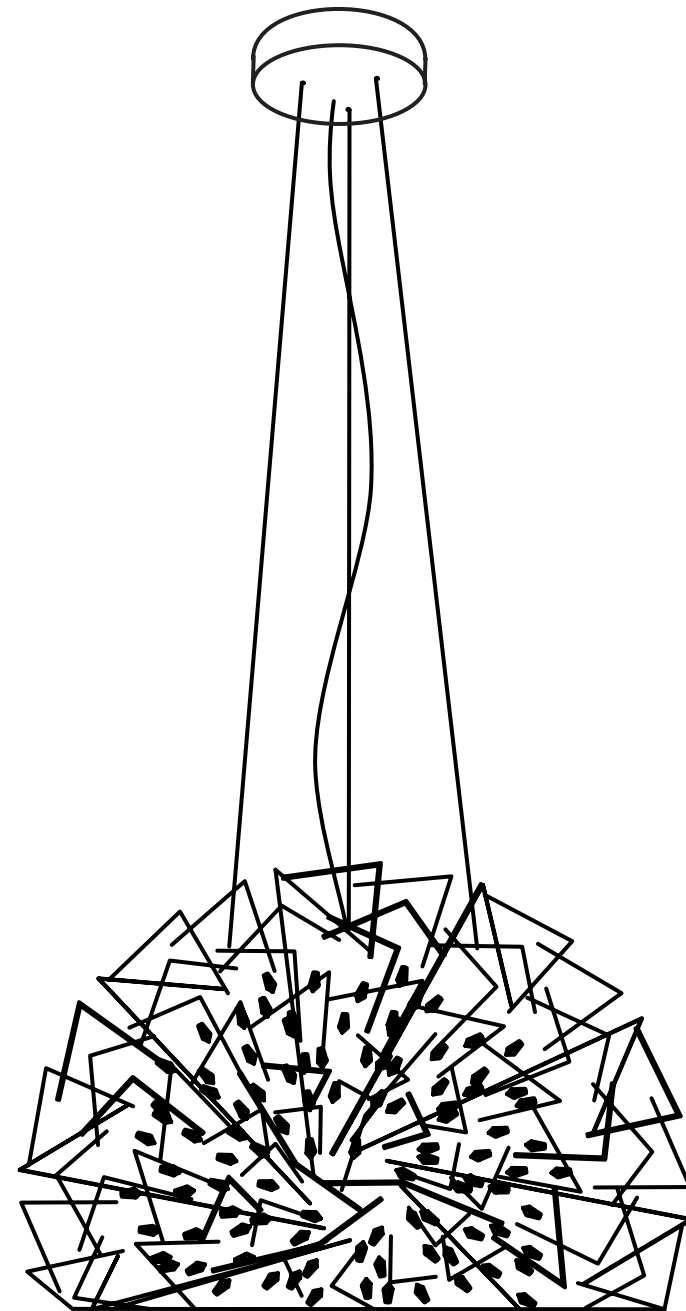
IT Conservare questa istruzione per la manutenzione | **UK** Keep these instructions for maintenance
FR Garder ces instructions pour l'entretien | **DE** Dies Wartungsanleitung ist aufzubewahren
PY Сохраните эту инструкцию по эксплуатации | عربي احتفظ بهذه الإرشادات للصيانة

TERZANI
LA LUCE PENSATA

Core dome pendant light

0P21S-FD

0P21S-FWD



Design Christian Lava

CORE

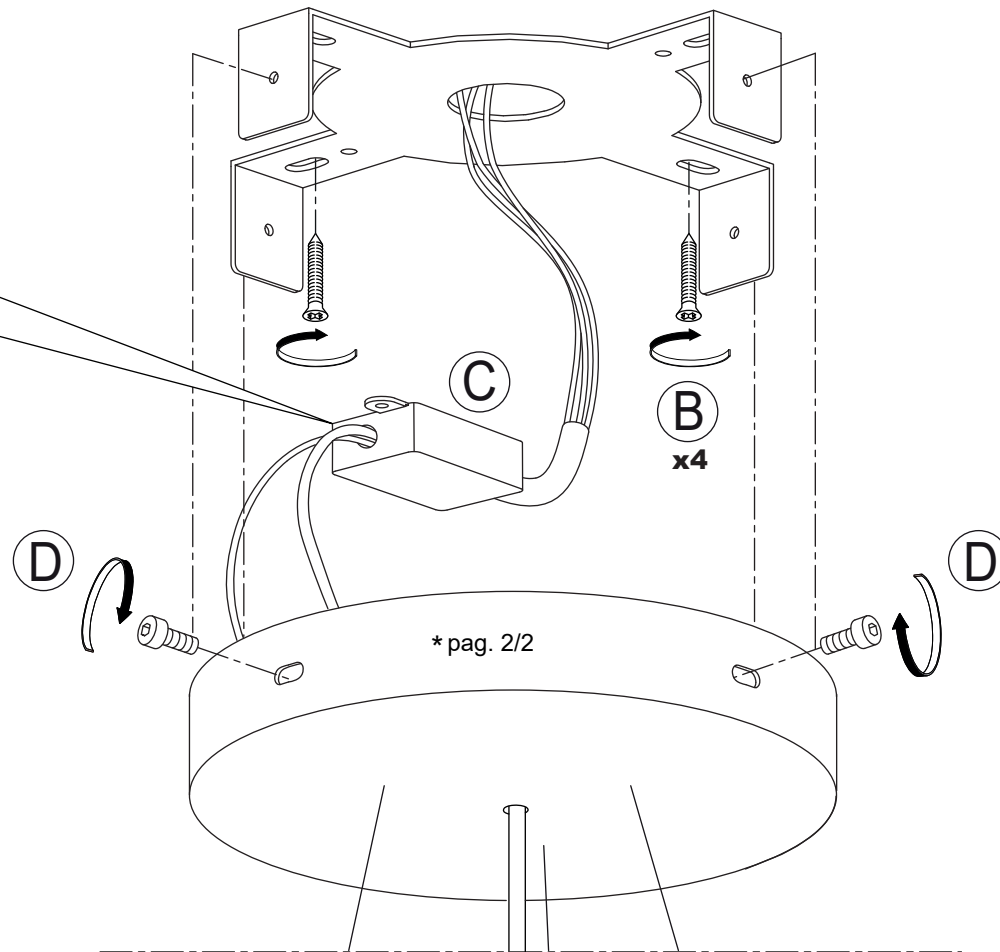
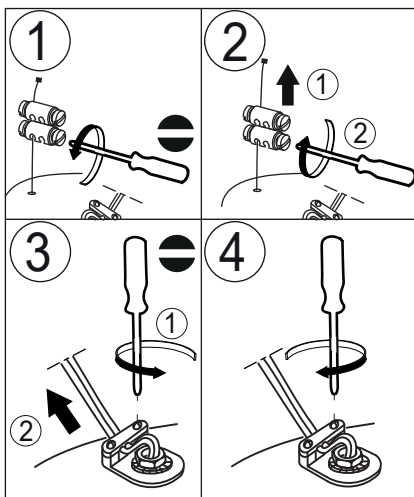
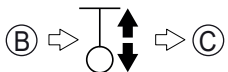
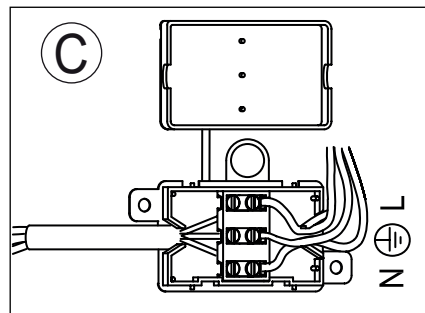
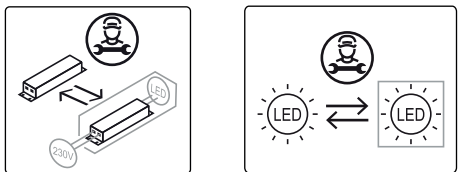
CODE 0P21S -- -- FD
3000K

CODE 0P21S -- -- FWD
2700K

220-240V ~ 50/60Hz MAX 18W

550mA 1xMAX 18W

integrated LED





CORE

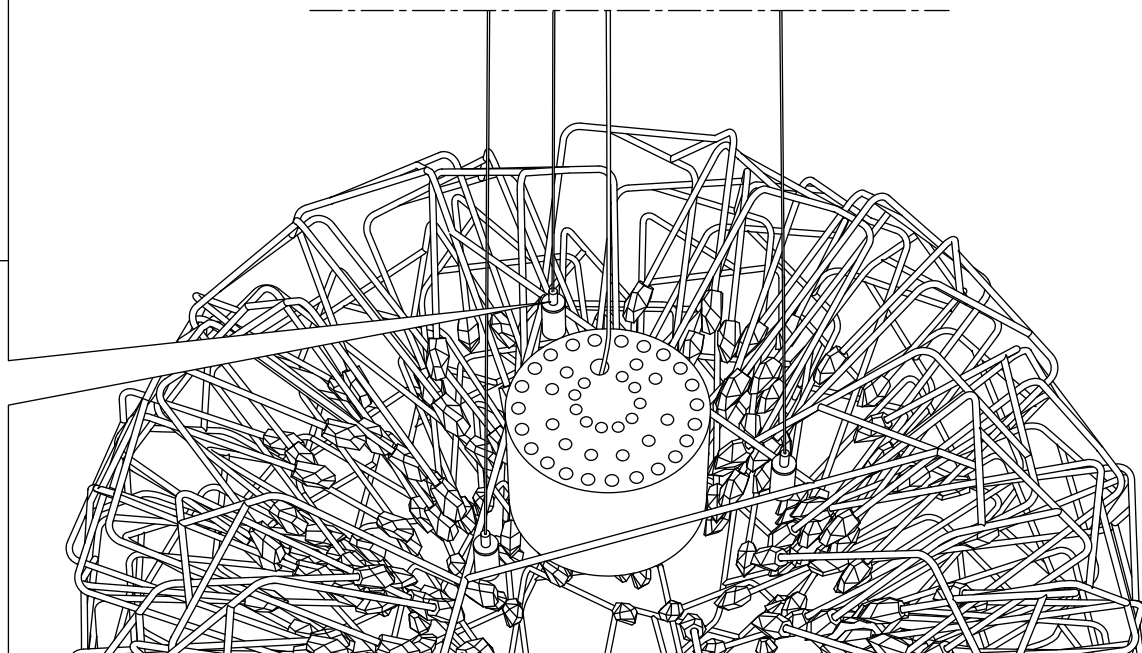
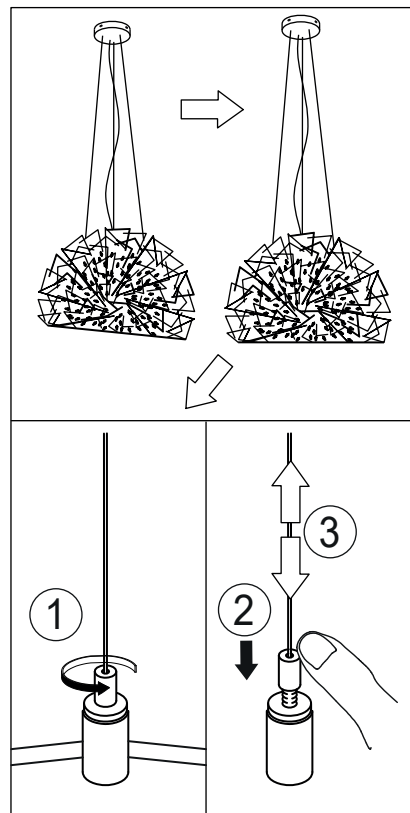
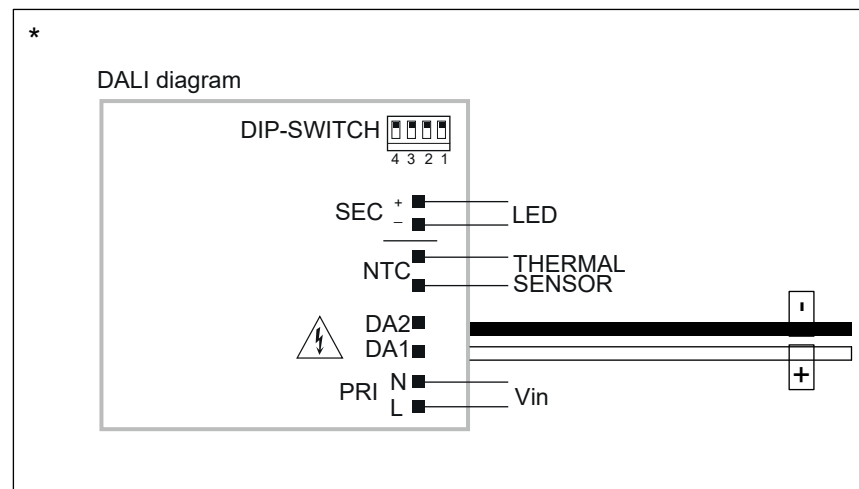
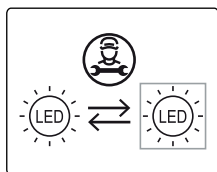
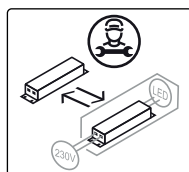
CODE 0P21S -- -- FD
3000K

CODE 0P21S -- -- FWD
2700K

220-240V ~ 50/60Hz MAX 18W

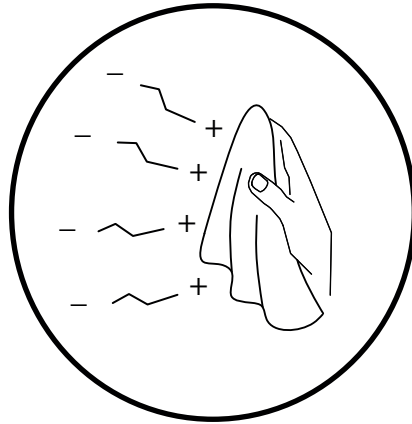
550mA 1xMAX 18W

integrated LED



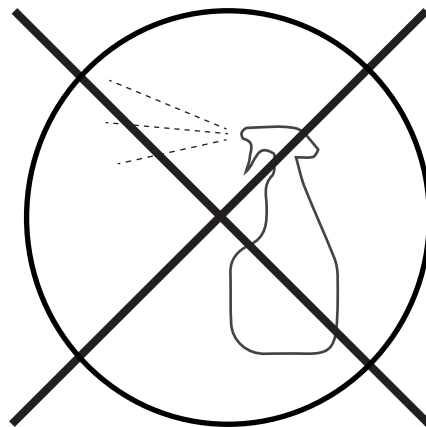
CLEANING INSTRUCTIONS

YES



- IT** Usare panno elettrostatico asciutto
UK Use dry electrostatic cloth
FR Utiliser un chiffon électrostatique sec
DE Verwenden sie ein trockenes elektrostattuch
PY Использовать сухую электростатическую ткань
عربي استخدم قطعة قماش جافة كهرباء

NO



- IT** Non usare prodotti chimici | Usare prodotti specifici solo per cristalli e vetri
UK Do not use chemical products | Use specific products only for crystals and glass
FR Ne pas utiliser des produits chimiques | N'utiliser des produits spécifiques que pur les cristaux et le verre
DE Verwenden Sie keine Chemikalien | Verwenden Sie bitte nur Glas-bzw Kristallreiniger
PY Нельзя использовать химикаты | Использовать только специальные средства для хрусталя и стекла
عربي لا تستخدم المنتجات الكيماوية | استعمل مواد مخصصة للكريستال والزجاج فقط



IT Conservare questa istruzione per la manutenzione | **UK** Keep these instructions for maintenance
FR Garder ces instructions pour l'entretien | **DE** Diese Wartungsanleitung ist aufzubewahren
PY Сохраните эту инструкцию по эксплуатации | عربي احتفظ بهذه الإرشادات للصيانة