

# Doodle, freehand design.

design Simone Micheli  
terzani.com







**Name**  
Doodle  
linear chandelier

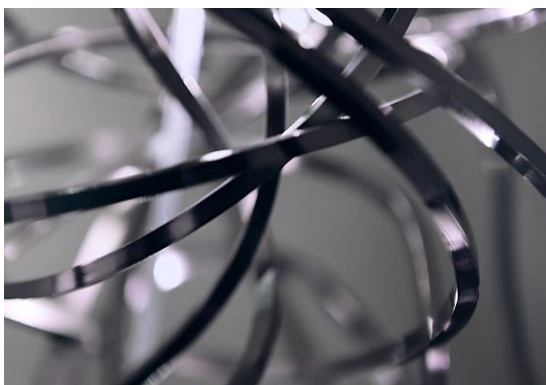
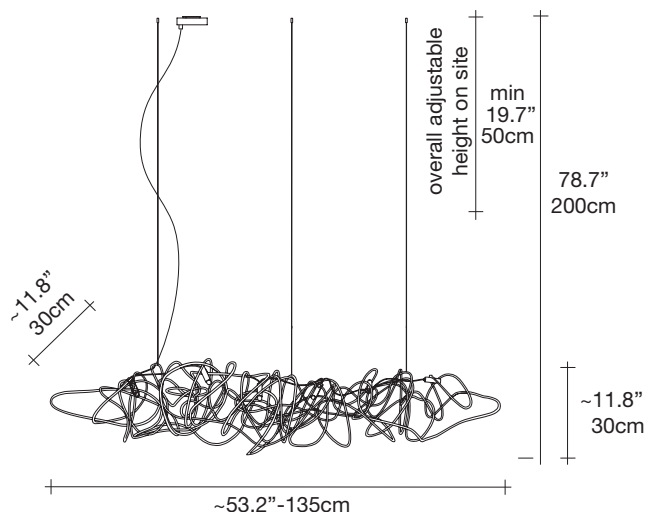
**Materials**  
brass



**Finishes | Code**

-  nickel plated  
OJ81S E7 C8
-  black amethyst  
OJ81S M4 C8
-  gold plated  
OJ81S L6 C8
-  copper (may age naturally)  
OJ81S L5 C8

**Body**



**Light source**

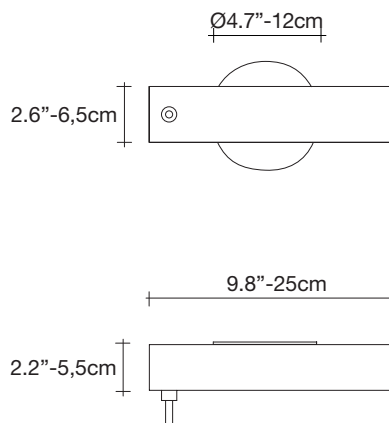
120V ~ 50/60Hz



dimnable options



**Canopy**



We no longer march in a straight line. Our lives are dynamic, intertwining collections of relationships, experiences and journeys. Reflecting the fluidity of our generation, designer Simone Micheli has created a new, contemporary light for Terzani Doodle. Like us, each Doodle is unique each pendant is handcrafted by artisans to resemble a randomised path. And, to give us control over the journey we want to take, each LED bulb can be placed anywhere on the light, not only reflecting the choices we make in life, but giving Doodle a special flexibility. Design Simone Micheli.